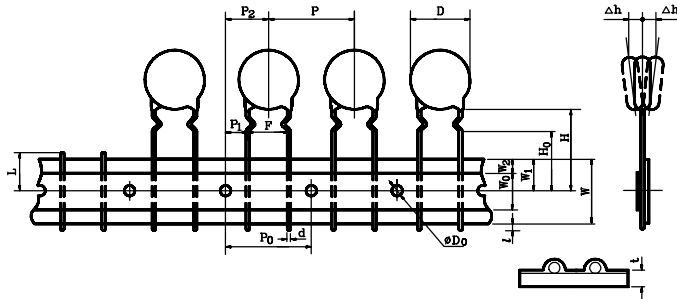


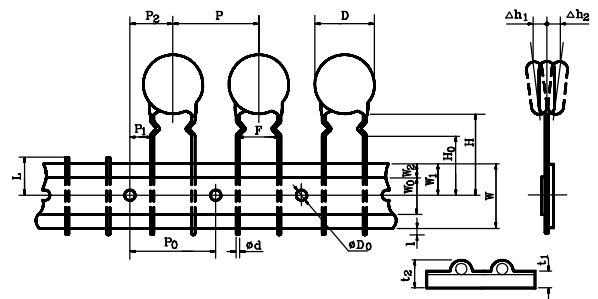
Packing

● TAPING FORM AND DIMENSION

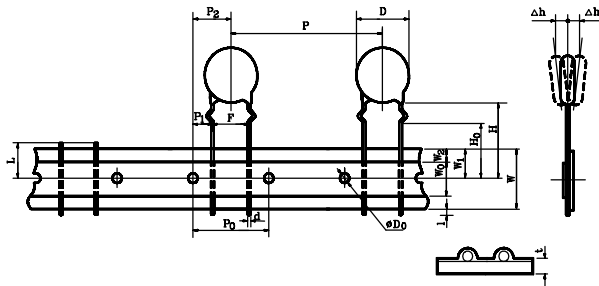
▶ 749, 959, 725 TYPE



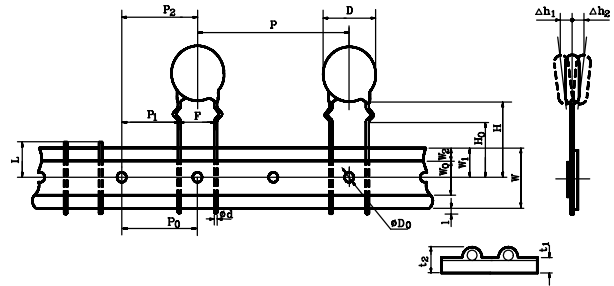
▶ 825 TYPE



▶ 830 TYPE



▶ 837 TYPE



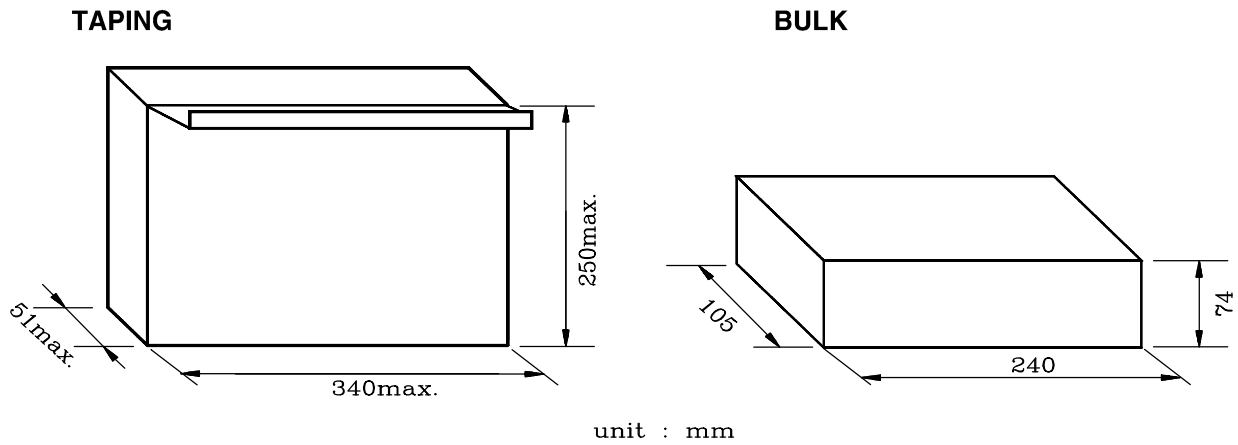
Type	D	D ₀	d	F	H	H ₀	∠h	L	ℓ	P	P ₀	P ₁	P ₂	t	W	W ₀	W ₁	W ₂
749, 959	3~12.0	4±0.2	0.6±0.05	5+0.8/-0.2	20+1.5/-1.0	16±0.5	0±2	11Max	1Max	12.7±1	12.7±0.3	3.85±0.7	6.35±1.3	0.7±0.2	18+1/-0.5	12.5Min	9±0.75	3Max
725, 825	5~15.0	4±0.2	0.65±0.05	7.5±1.0	20+1.5/-1.0	16±0.5	0±2	11Max	1Max	15.0±1	15.0±0.3	3.75±1.0	7.5±1.5	0.7±0.2	18+1/-0.5	12.5Min	9±0.75	3Max
830	13.0~22.0	4±0.2	0.65±0.05	7.5±1.0	20+1.5/-1.0	16±0.5	0±2	11Max	1Max	30.0±1	15.0±0.3	3.75±1.0	7.5±1.5	0.7±0.2	18+1/-0.5	12.5Min	9±0.75	3Max
837	13.0~22.0	4±0.2	0.65±0.05	10.0±1.0	20+1.5/-1.0	16±0.5	0±2	11Max	1Max	25.4±1	12.7±0.3	7.7 ±1.0	-	0.7±0.2	18+1/-0.5	12.5Min	9±0.75	3Max

● BULK DIMENSION

Style	Long			Short		
	Code	793	895	897	613	615
Forming	Informing	Outforming	Outforming	Informing	Outforming	Outforming
Lead Spacing(F)	5.0mm	7.5mm	10.0mm	5.0mm	7.5mm	10.0mm
Lead Length (L)	Min 25.0 mm	Min 25.0 mm	Min 25.0 mm	4.5±1.0 mm	4.5±1.0 mm	4.5±1.0 mm

Packing

● PACKING AND EXTERNAL DIMENSION



● PACKING QUANTITY

TAPING

Products	50, 500V Semi-con	Mid-High Voltage / AC			
Diameter	3~12.0 ϕ	1, 2kV : 5.0~12.0 ϕ	1, 2kV : 12.0~15.0 ϕ 3~6kV : 5.0~15.0 ϕ AC NU Type : 8~15.0 ϕ	1~6kV : 13.0~22.0 ϕ AC : 13.0~22.0 ϕ	1~6kV : 13.0~22.0 ϕ AC : 13.0~22.0 ϕ
Taping Code	749, 959	959	725, 825	830	837
Quantity	2,000 pcs	2,000 pcs	1,000 pcs	500pcs	500pcs

BULK

Classification Nominal Diameter	50V	500V	Semicon	1kV~6kV		AC Condenser	
				Long	Short	Long	Short
3 ϕ	500	500	500	-	-	-	-
4 ϕ	500	500	500	-	-	-	-
5 ϕ	500	500	500	300	500	-	-
6 ϕ	500	500	500	300	500	-	-
7 ϕ	500	500	500	300	500	-	-
8 ϕ	500	500	500	300	500	-	-
9 ϕ	500	500	500	300	500	200	200
10 ϕ	500	500	500	300	200	200	200
11 ϕ , 12 ϕ	500	500	500	200	200	200	200
13 ϕ , 14 ϕ	200	200	200	200	200	100	100
15 ϕ , 16 ϕ	200	200	200	100	200	100	100
17 ϕ , 18 ϕ	-	-	-	100	100	100	100
19 ϕ , 20 ϕ	-	-	-	100	100	100	100