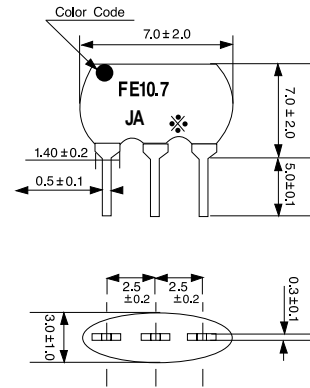


CERAMIC FILTER(MHz) FOR COMMUNICATION



FEATURES

- High Selectivity
- Low Insertion Loss
- Low Ripple within Passband



SPECIFICATIONS

PART NUMBER	Frequency Tolerance	Insertion Loss (dB) Max.	3dB Band Width (kHz)	20dB Band Width (kHz) Max.	Ripple (dB) Max.	Spurious (9~12MHz) (dB) min.
FE10.7HA	10.7 ± 30kHz	9.0	110 ± 30	350	1.0	30
FE10.7JA	10.7 ± 30kHz	6.5	150 ± 40	400	1.0	35
FE10.7FA	10.7 ± 30kHz	6.5	180 ± 40	470	1.0	35
FE10.7EA	10.7 ± 30kHz	6.0	230 ± 50	520	1.0	35
FE10.7AA	10.7 ± 30kHz	6.0	280 ± 50	590	1.0	30

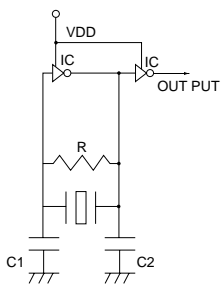
CERAMIC RESONATOR(MHz)



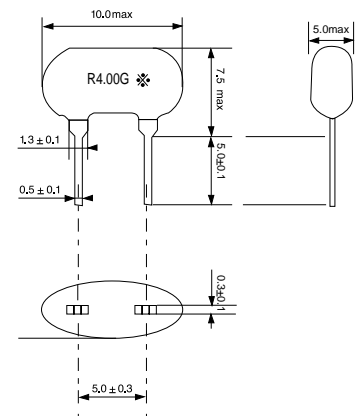
FEATURES

- Good Stability Over A Wide Temperature Range
- Compact And Excellent Shock Resistance Performance

TEST CIRCUIT



IC	: 1/6CD4069UBE(RCA) × 2
VDD	: +5V ± 0.1V
R	: 1MΩ
C1,C2	: 30pF ± 1%



SPECIFICATIONS

Part Number	Center Freq. (MHz)	Initial Tolerance (%) Max.	Resonant IMP. (Ω) Max.	Temp. Stability (%) Max.	Aging (%) Max.	Remark
RA2.00MG#	2.00	±0.5	80	±0.3	±0.3	RECOMMENDING EXTERNAL LOAD CAPACITANCE : 30pF ± 1%
RA3.58MG#	3.58	±0.5	30	±0.3		
RA3.64MG#	3.64	±0.5	30	±0.3		
RA3.84MG#	3.84	±0.5	30	±0.3		
RA4.00MG#	4.00	±0.5	30	±0.3		
RA6.00MG#	6.00	±0.5	30	±0.3		
RA8.00MG#	8.00	±0.5	30	±0.3		
RA12.0MG#	12.00	±0.5	30	±0.3		