

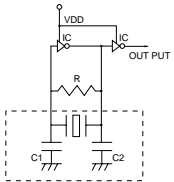
# CERAMIC RESONATOR(MHz) WITH BUILT-IN LOAD CAPACITANCE



## FEATURES

- Oscillation Circuits Do Not Require External Load Capacitors
- Good Stability Over A Wide Temperature Range
- Compact And Excellent Shock Resistance Performance

## TEST CIRCUIT



IC	: 1/6CD4069UBE(RCA) × 2
VDD	: +5V ± 0.1V
R	: 1M $\Omega$
C1, C2	: 30pF ± 5%

## SPECIFICATIONS

Part Number	Center Freq. (MHz)	Initial Tolerance (%) Max.	Resonant IMP. ( $\Omega$ ) Max.	Temp. Stability (%) Max.	Aging (%) Max.	Remark
RT2.00MG#	2.00	±0.5	80	±0.3	±0.3	BUILT-IN CAP. : 15pF ± 20% : 22pF ± 20% : 30pF ± 20%
RT3.58MG#	3.58	±0.5	30	±0.3		
RT3.64MG#	3.64	±0.5	30	±0.3		
RT3.84MG#	3.84	±0.5	30	±0.3		
RT4.00MG#	4.00	±0.5	30	±0.3		
RT6.00MG#	6.00	±0.5	30	±0.3		
RT8.00MG#	8.00	±0.5	30	±0.3		
RA12.0MG#	12.00	±0.5	30	±0.3		